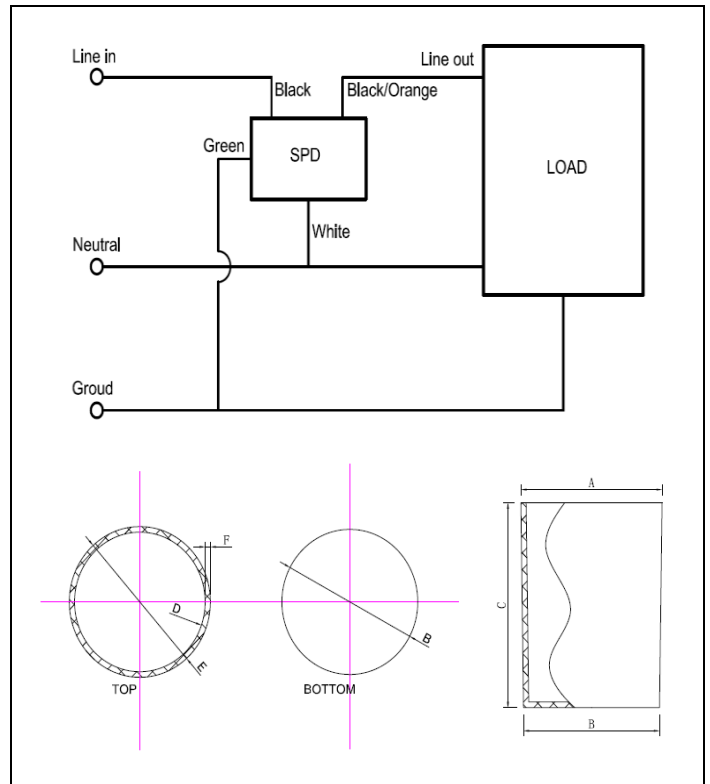




Model No.	SPD-480S-20KA
Product Type	SPD Type 4CA
MCOV	550
Mains Voltage	480
Frequency	50/60 Hz
Status	Production

Mains Voltage (VAC)	480	
Maximum Continuous Operating Voltage (VAC)	550	
Max Peak Current (8/20us)(KA)	In	10
	I <sub>max</sub>	20
Combination Wave (1.2/50μs-8/20μs)(KV/KA)	V <sub>n</sub>	20
	V <sub>max</sub>	20*
Measured Limited Voltage (MLV)(V)	L-N	3050
	L-G	3160
	N-G	3130
Case Physical Parameters (mm)	Top Width(A)	45
	Bottom Width(B)	43
	Height(C)	65
	Diameter(E)	45
Operation Temperature(°C)	-40~+85	
IP Rating:	IP67	



16 AWG lead wire length (mm)	Black (Strip 10mm Tin Plated)	195±10
	White (Strip 10mm Tin Plated)	195±10
	Green (with Eyelet Ø5.2)	260±15
	Black and orange (Strip 10mm Tin Plated)	195±10

\* Protects against surges according to UL1449 and IEEE C62.41.2 C.

\* 8.0 Amp maximum load for SPD-\*\*\*S-\*\*\*-\*\*\* series

\* Can be used with LED Driver, e-HID Ballast. Electronic Fluorescent Ballast, Induction Generator

\*\* Limited by test equipment max ratings

Document No:	PS_SPD-480S-20KA_M01
Date:	2020-1-16 (yyyy-mm-dd)