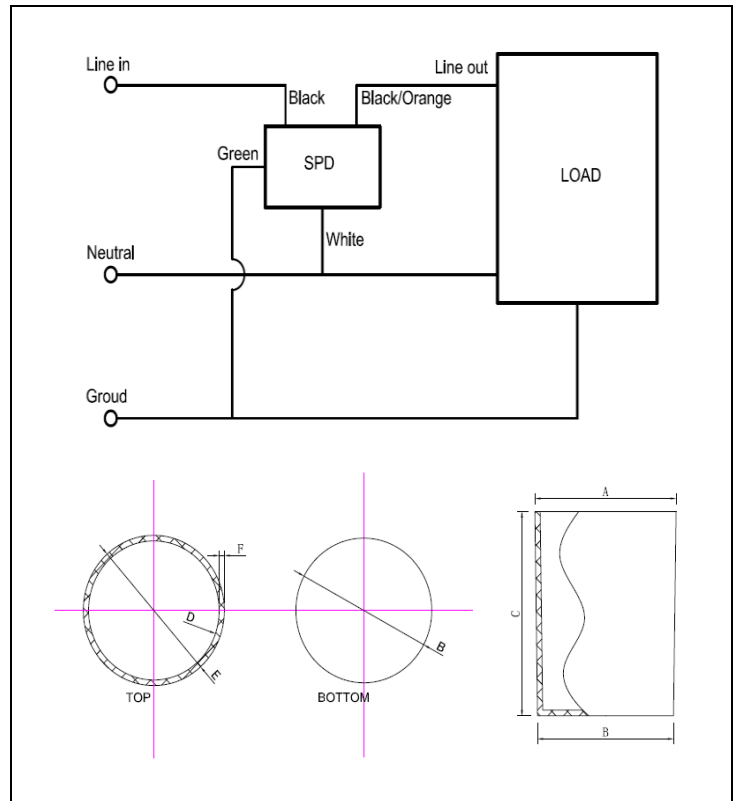




Model No.:	SPD-277S-20KA
Product Type	SPD Type 4CA
MCOV:	320
Mains Voltage :	120~277
Frequency	50/60 Hz
Status	Production

Mains Voltage(VAC)	120~277	
Maximum Continuous Operating Voltage (VAC)	320	
Max Peak Current(8/20us)(KA)	In	10
	I <sub>max</sub>	20
Combination Wave (1.2/50μs-8/20μs)(KV/KA)	V <sub>n</sub>	20
	V <sub>max</sub>	20**
Measured Limited Voltage (MLV)(V)	L-N	1260
	L-G	1280
	N-G	1840
Case Physical Parameters (mm)	Top Width(A)	45
	Bottom Width(B)	43
	Height(C)	65
	Diameter(E)	45
Operation Temperature(°C)	-40~+85	
Leads AWG :	16	
IP Rating:	IP67	

16 AWG lead wire length (mm)	Black (Strip 10mm Tin Plated)	195±10
	White (Strip 10mm Tin Plated)	195±10
	Green (with Eyelet Ø5.2)	260±15
	Black and orange (Strip 10mm Tin Plated)	195±10



- \* Protects against surges according to UL1449 and IEEE C62.41.2 C.
- \* 8.0 Amp maximum load for SPD-\*\*\*S-\*\*\*-\*\*\* series
- \* Can be used with LED Driver, e-HID Ballast. Electronic Fluorescent Ballast, Induction Generator
- \* CAUTION: When Mains Voltage is 120~277VAC: For use only with universal input voltage LED Drivers/Ballast (or dedicated 277 Vin)

\*\* Limited by test equipment max ratings

Document No:	PS_SPD-277S-20KA_M02
Date:	2016-04-07(yyyy-mm-dd)